



Land, Services and Citizenship for the Urban Poor

Towards Systemic Change and Scale

21 January , 2010 – Mumbai, India

Cities Alliance
Cities Without Slums

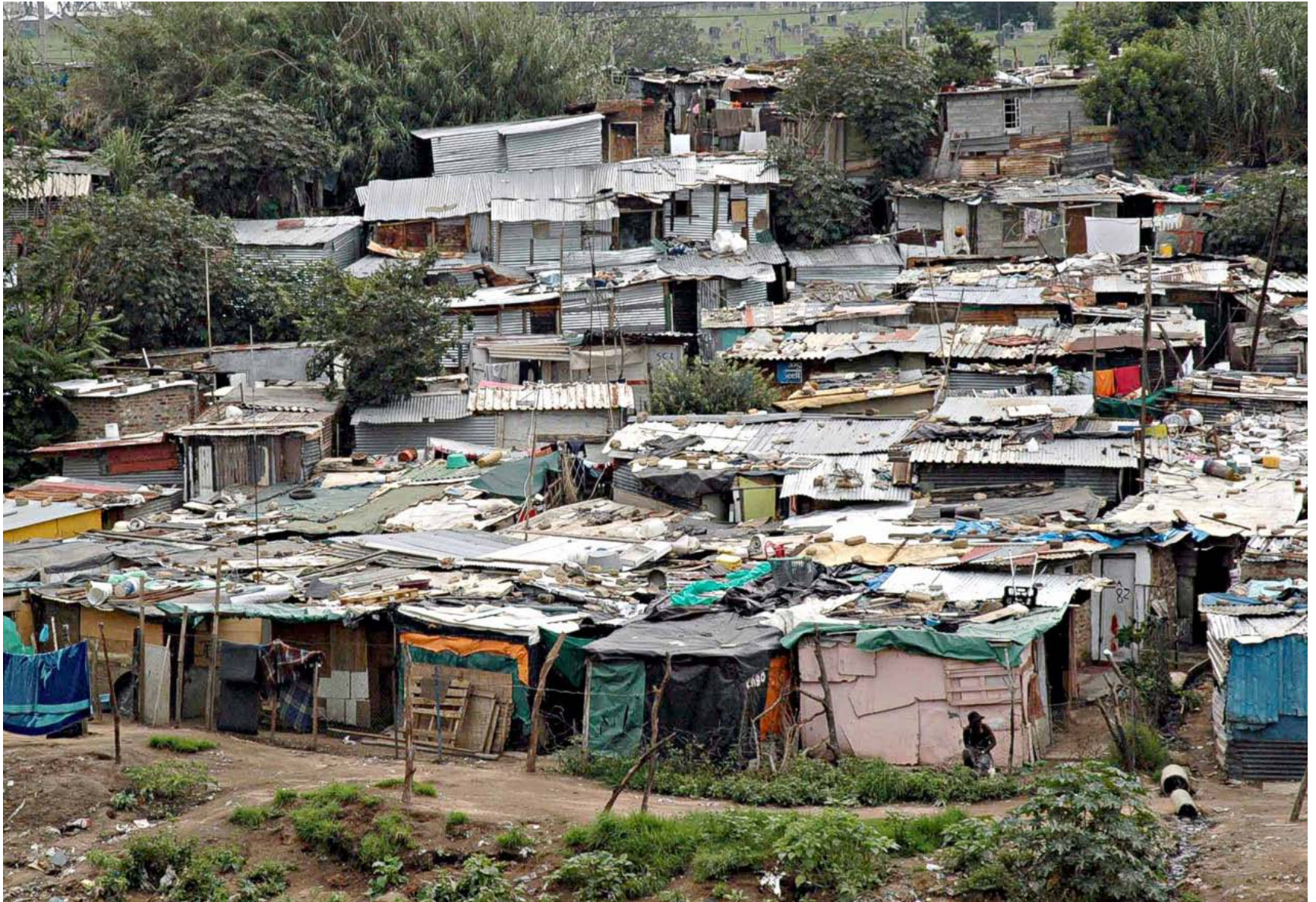


Since our last CG Meeting...



... slums have grown by 43 million people

This Week's Arrivals

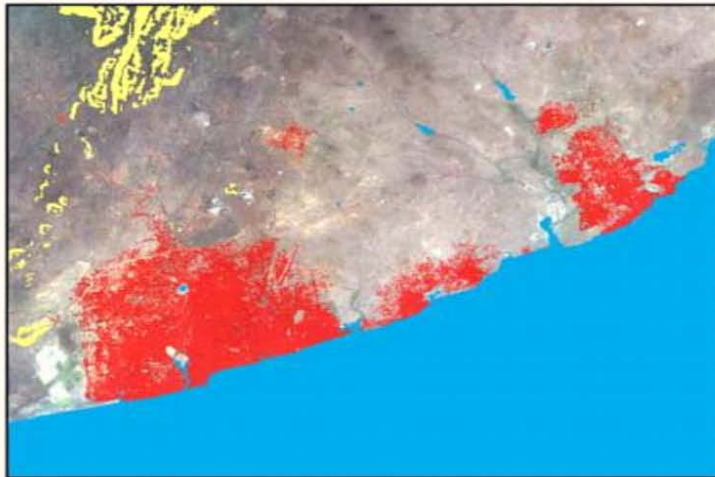


Before Long



Growth, Expansion and Density

Accra, Ghana



T₁: 6-Mar-85



T₂: 4-Feb-00

0 5 10 15 20 km



1:350,000

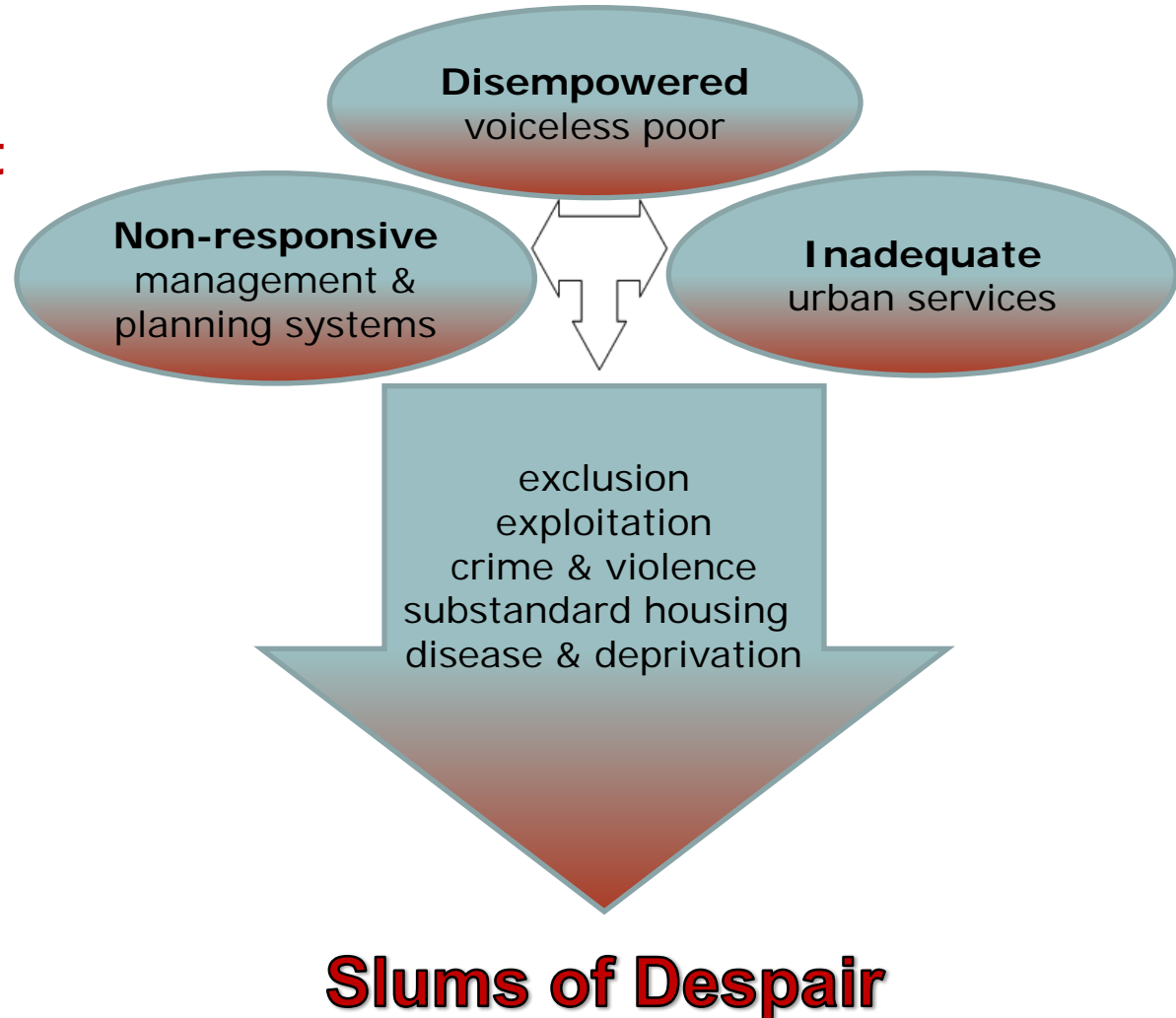
- Water
- Excessive slope
- Built-up area



Measure	T ₁	T ₂	Annual % Change
Population	1,882,990	2,789,380	2.67%
Built-Up Area (sq km)	133.35	344.26	6.56%
Average Density (persons / sq km)	14,120.39	8,102.64	-3.66%
Built-Up Area per Person (sq m)	70.82	123.42	3.79%
Average Slope of Built-Up Area (%)	3.11	3.11	0.01%
Maximum Slope of Built-Up Area (%)	12.28	12.28	0.00%
The Buildable Perimeter (%)	0.71	0.73	0.15%
The Contiguity Index	0.69	0.80	1.01%
The Compactness Index	0.68	0.61	-0.75%
Per Capita Gross Domestic Product	\$1,325.50	\$1,836.23	2.21%

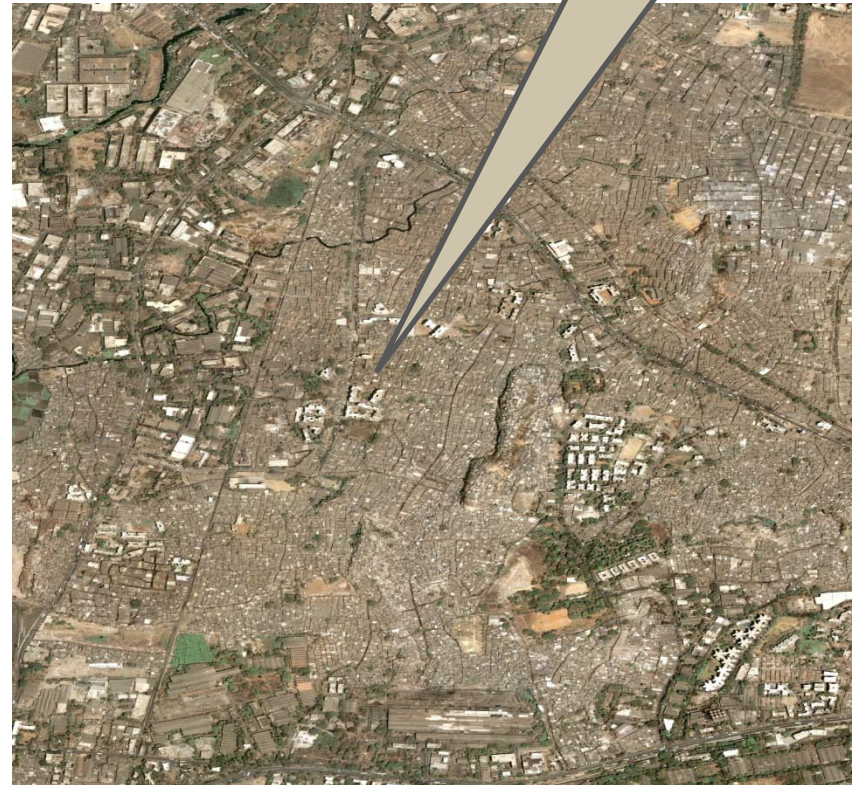
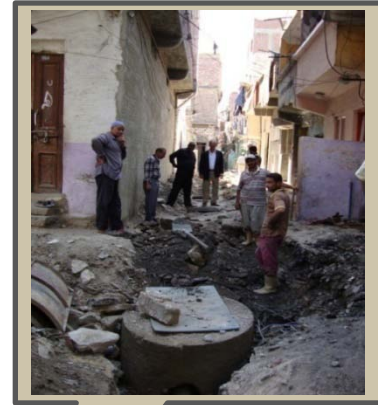
Why are slums continuing to grow even in countries receptive to urbanisation?

- ❖ **Non-responsive urban management and planning systems**
- ❖ **Pressure on municipal services**
- ❖ **Marginalisation of the poor**



Why are slums continuing to grow even in countries receptive to urbanisation?

- ❖ Ad hoc, pilot projects
- ❖ On/off, unsustained programming
- ❖ Duplication of effort
- ❖ Disconnect of key role players
- ❖ Nonalignment of planning & investment
- ❖ Dispersed good practice



Systemic change and scale in Freetown?



Systemic change and scale in Accra?



Systemic change and scale in Can Tho?



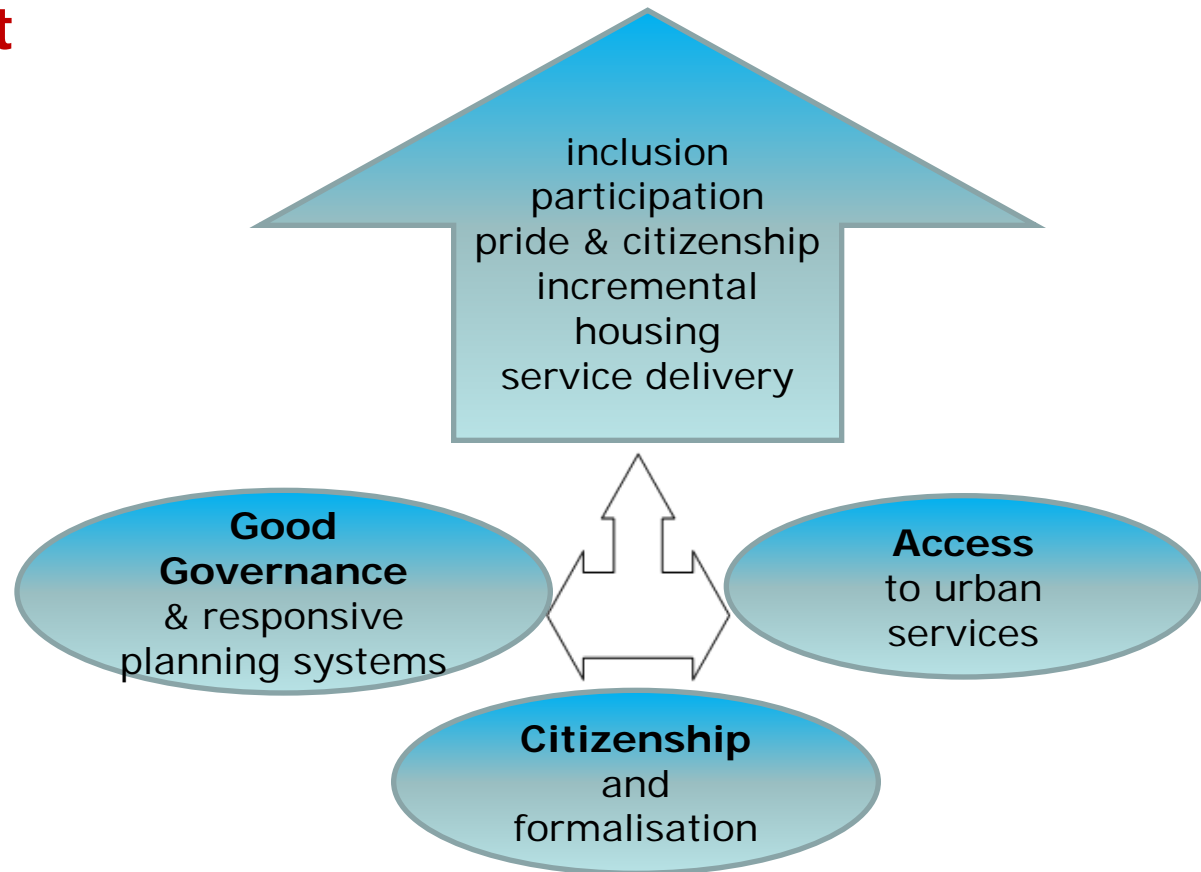
Responding to the Challenge

- ❖ **Ad hoc, pilot projects** ➤ **In-country programmes**
- ❖ **On/off, un-sustained programming** ➤ **Long term commitment**
- ❖ **Duplication of effort** ➤ **Coherence of effort**
- ❖ **Disconnect of key role players** ➤ **Alignment of key role players**
- ❖ **Weak linkages between planning & investment** ➤ **Structured planning and investment**
- ❖ **Dispersed good practice** ➤ **Convergence of good practices**

Responding to the Challenge

- ❖ **Non-responsive urban management and planning systems**
- ❖ **Pressure on municipal services**
- ❖ **Marginalisation of the poor**

Settlements in Transformation



Land, Services and Citizenship for the Urban Poor

Principles

- ❑ Support of the country's urban agenda
- ❑ Rights and Responsibilities approach
- ❑ Structured dialogue and integrated planning (national, local government, community)
- ❑ Creating institutional arrangements for multi-stakeholder participation and partnerships
- ❑ Heterogeneous understanding of community (women, youth, private sector...)
- ❑ Balance between process and service delivery
- ❑ Capital investment through resource mobilisation and alignment

Land, Services and Citizenship for the Urban Poor

Objectives

- ❖ **Citizenship:** The active engagement of slum dweller households in citizenship rights and responsibilities through improved urban governance and formalisation
- ❖ **Access to Services:** Improved qualitative and quantitative access to municipal services for slum dweller households
- ❖ **Effective and Efficient Inclusive Development:** Effective and efficient inclusive urban development policies and strategies enabling better management of future urban growth

Citizenship

- ❑ Rights and Responsibilities of citizens awareness and training
- ❑ Registration of all household structures & small businesses
- ❑ Development of appropriate savings-based financial model
- ❑ Promotion of increased security of tenure
- ❑ Citywide Development Forums



Forced Removal is by Definition Traumatic



Access to Services

- ❑ Capacity building and empowerment (community, local government)
- ❑ Participatory project identification and prioritisation
- ❑ Strengthen municipal management and planning systems
- ❑ Capitalisation of a Community Upgrading Fund



Effective and Efficient Inclusive Development

❑ National Urban Policy Dialogue

- Linking communities, local/national government, NGOs
- Informing the national urban debate

❑ Commissioning research on defined urban problems

- Informing urban policy
- Improving urban planning and management

❑ Capacity building of existing and future urban planners

- Supporting the capacity of public universities
- Participating in the planning and research processes of the project

Cities Alliance
Cities Without Slums



Cities Alliance
1818 H Street, NW,
Washington, DC 20433, USA
Tel. (+1 202) 458-1335
Fax. (+1 202) 522-3224

www.citiesalliance.org