

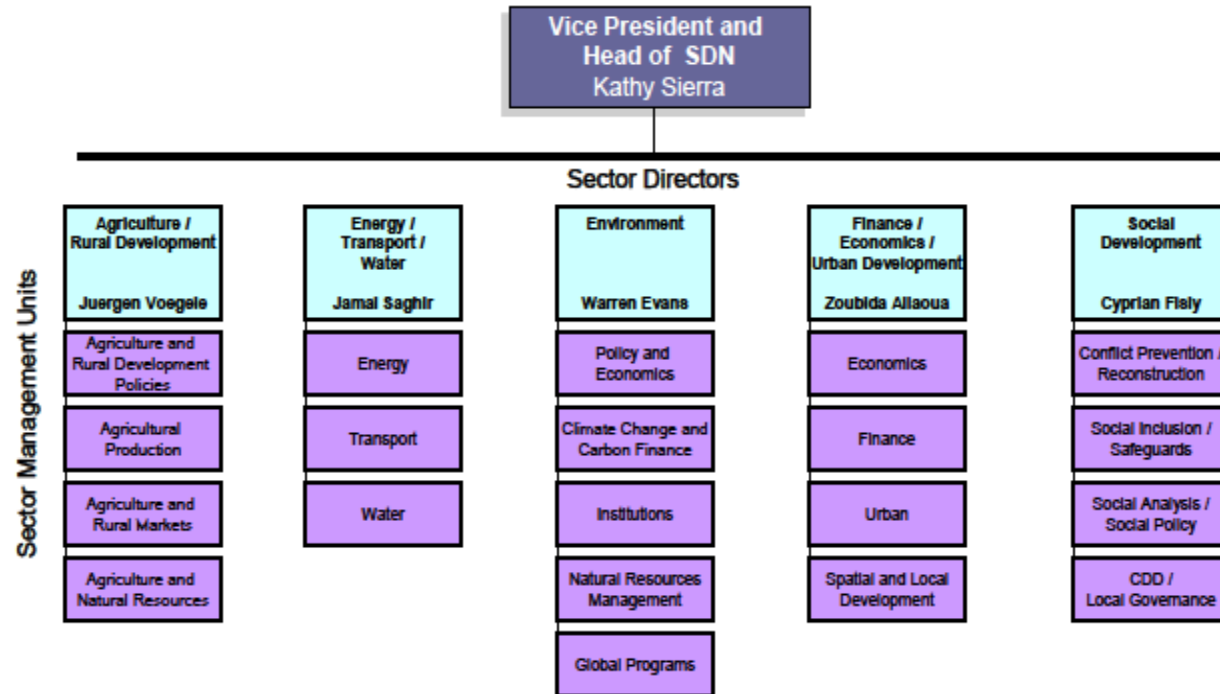


# **FEU Reorganization Cities Alliance CG, Mumbai January 2010**



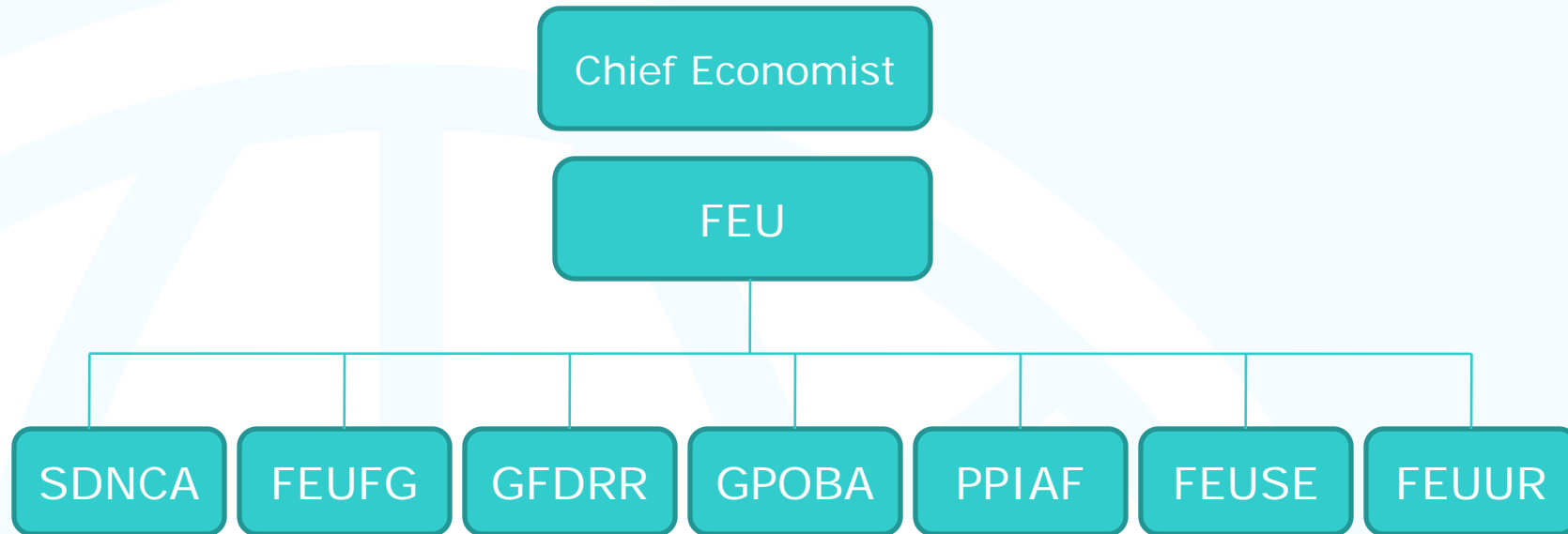


## Sustainable Development Network (SDN) Anchor Organization





# FEU Organizational Chart





## FEU strategy has been guided by

- ❖ Need to Clarify FEU Role and Mission—Establishing FEU’s leadership position in the SDN anchor and with the regions – better balancing between KM and cross -support
- ❖ FEU focal point across anchor Depts and with regions
- ❖ Creating New Synergies around the way we work: Reducing Barriers to Integration within FEU (BB and GPPs), with DEC, other Networks, regions to better serve internal and external clients
- ❖ Optimizing existing staff skills and Strengthening capacity
- ❖ Recognizing that synergies between GPPs and BBs can be done through improving how we work together





# FEU Reorganization Principles

1. FEU BB focus now in two main Pillars:
  - Financial Innovation to support sustainable development
  - Operationalising the Urban and Local Government Agenda
2. One cross-cutting function:
  - Economics and Corporate (linked to Chief Economist office)
3. BB Units and GPPs identified significant areas for closer integration and complementary support
4. As a result:
  - Finance and Guarantees has new role and renamed Financial Solutions
  - Urban and Spatial Units will merge into Urban and Local Government
  - Economics Function reorganized according to new pillar/cross-cutting function structure
    - ❖ *Areas directly related to PPI/PPP and infrastructure regulation will merge with Financial Solutions*
    - ❖ *Economic Policy business line is still being discussed with the Chief Economist and will include Corporate review function , possibly the Governance business line*
5. Distance Matters---Spatial location : Urban and Local Gov, CA, and GFDDR together, Financial Solutions, PPIAF and GPOBA second block to reap the synergies of proximity and agglomeration to use the WDR's conceptual framework





## Areas of collaboration within FEU:





## Economics Group

- ❖ PPI Database and PPI/PPP expertise (with Finance, Global Expertise Team (GET) PPP)
- ❖ Infrastructure Regulation (with Finance, GET PPP)
- ❖ Economic analysis of cities and climate change
- ❖ Economic analysis of urban service provision





## Finance Group

- ❖ Support in operationalizing Urban Agenda, and Cities Alliance, in slum upgrading, and sub-national and municipal finance - with GPOBA, Urban and Local Government Anchor and Cities Alliance;
- ❖ Improved collaboration with PPIAF
- ❖ Mainstreaming finance approaches learning from PPIAF, Cities Alliance and GPOBA
- ❖ Support to GFDRR on structures for disaster risk sharing







## PPIAF

- ❖ Improved FEU use of PPIAF's best practices and regional programs
- ❖ Possibilities for PPIAF support for strategic knowledge products in support of infrastructure services to the poor, using GPOBA's best practices





## GPOBA

- ❖ Strengthen partnership with PPIAF, focusing on OBA as component of a PPP. Co-finance TA and knowledge products
- ❖ Support to Urban and local Government Anchor, and Cities Alliance, on Slum upgrading, housing finance for poor, and solid waste / urban transport
- ❖ TA support for PPP, PRG operations, renewable energy etc – with Finance





## Urban and Local Government Anchor:

- ❖ Operationalize the urban and local government Agenda – with support from Cities Alliance, GFDRR, Finance
- ❖ Cities and Climate Change, and Eco2 cities – with Cities Alliance





## Spatial Cluster:

- ❖ Urbanization reviews – could benefit from Rural-Urban Transformation and Spatial Analysis of Growth business lines, as well as GIS analytical support
- ❖ Cities and Climate Change – could benefit from recent pilot spatial analysis of natural disasters in Senegal, now being rolled out in Africa and Asia with regional GFDRR and Urban teams
- ❖ Sub-national finance and Public Expenditure in support of urban development– could benefit from ongoing thinking on spatial aspects of PERs
- ❖ Urban land market analysis; – could benefit from current work on reshaping economic geography, improving fluidity of land, labor and product markets for cities development
- ❖ GIS support – improved GIS data organization and management can benefit urban, climate change and disaster management work





## GFDRR

- ❖ Making cities disaster resilient – with Urban and Local Government Anchor, Cities Alliance and regions
- ❖ Innovations in financing disaster risk management and disaster recovery - with Finance and ENV





# Cities Alliance

- ❖ While respecting Cities Alliance unique governance structure, there are many areas of synergies between Urban and Local Government Anchor and cities alliance: support for Urbanisation reviews, best practices in slum upgrading, CDS gaps, Cities and Climate Change (with UNEP and UN-Habitat), Urban advocacy etc
- ❖ Low-income , and municipal finance – with Finance, GPOBA and ULGA
- ❖ Operational and policy collaboration with GFDRR – west Africa floods, access of local government, study on Slum settlements on Transport Arteries in Asia
- ❖ Operational linkages on slum upgrading and OBA – with GPOBA
- ❖ Slum enumerations – with ULGA and Spatial

