



RAPID URBANIZATION AND THE CHALLENGE FOR SECONDARY CITIES

By Hon. Michael K. Werikhe
The Minister of State for Housing
Uganda.

Background

- Population is growing at 3.2% p.a. from 24.2m in 2002 to 33 millions in 2010.
- Urban population constitutes 15% of the population, growing at 5.1% per annum.
- Kampala city, Capital city has a population of about 2 million constituting 40% of the urban population
- On average 60% of the urban population live in slums and informal settlements.

Key Issues

- High population growth rate: Uganda has one of the highest fertility rates at 6.7 children per female, which has serious implications on the resource use.
- Inadequate capacity to plan and manage urban growth: There are very few planners employed in the Local Government hence developments proceed planning
- Inappropriate policies that tend to focus more on rural development than urban development besides absence of a comprehensive national urban policy

Key Issues (cont'd)

- Ineffective regulatory mechanism that has contributed to the proliferation of unplanned developments
- High levels of poverty resulting from massive unemployment and underemployment characteristic of lack of skills for gainful employment
- Political conflicts that fuelled the influx of rural migrants to urban areas
- Obsolete legislation that has been rendered ineffective
- Multiple land rights that hamper easy access to land for orderly developments.

Challenges

- Increased pressure on existing infrastructure and services hence deterioration.
- Increased backlog in housing & other amenities
- Increased urban poverty.
- Environmental degradation as they settle in fragile lands
- Increase threat of crime and “lawlessness”
- Inadequate municipal financing
- Increased proliferation of slums and informal settlements

What has been done?

- The formulation of the National Slum Upgrading Strategy which prescribes measures to improve conditions as well as prevent emergency of new slums
- The upgrading of slums in Namuwongo in Kampala, Masese in Jinja, Malukhu in Mbale, and Oli in Arua.
- The profiling of slums with a view of generating basic data and information necessary for planning
- The preparation of structure (Master) plans for 73 towns
- Formulation of the National Landuse Policy
- Review of the Town and Country Planning Law

Planned Programmes

- Formulation of the National Urban Policy
- Formulation of the National Development Plan for Uganda
- Review of the National Housing Policy
- Review of the Building legislation
- Formulation of the National Land Policy
- The enactment of the Landlord – Tenant Relationship Law

Lessons Learnt

- Community involvement and ownership is key to the success of any upgrading initiatives
- Income enhancement mechanisms should be an integral component of slum improvement projects
- Training and skills development empowers the slum dwellers for gainful employment
- Slum upgrading should be a holistic approach
- Full cost recovery should be adopted
- Public –Private – People Partnerships is very important
- Mixed development use should be incorporated in the design to maximize the use of limited land as well as increasing employment opportunities for the slum dwellers

Need for a New Approach

- There is a need for wholly new approaches to planning and urban management moving away from regulation and control towards flexible planning instruments that allow authorities to address the real challenges and opportunities posed by urbanization.
- Secondary Cities Support Programme for transformation of settlements for the urban poor in Uganda

Objectives

- To enable slum dweller households in 5 selected municipalities to actively engage in both securing their rights and honouring their responsibilities through improved urban governance and formalization.
- To facilitate slum dweller households living within the 5 selected municipalities to improve their qualitative and quantitative access to municipal services.
- To enable the Government of Uganda in partnership with key stakeholders to develop effective and efficient inclusive urban development policies and strategies for better management of future urban growth.

5 Secondary Cities



- Arua
- Jinja
- Kabale
- Mbale
- Mbarara

Project Description

Empowerment of Urban Citizenry

- Establishment of Urban Development Fora
- Registration of all HH Structures & small businesses with # and Street Name
- Promotion of increased tenure security
- Devt of appropriate savings-based financial model to enable access to affordable loans

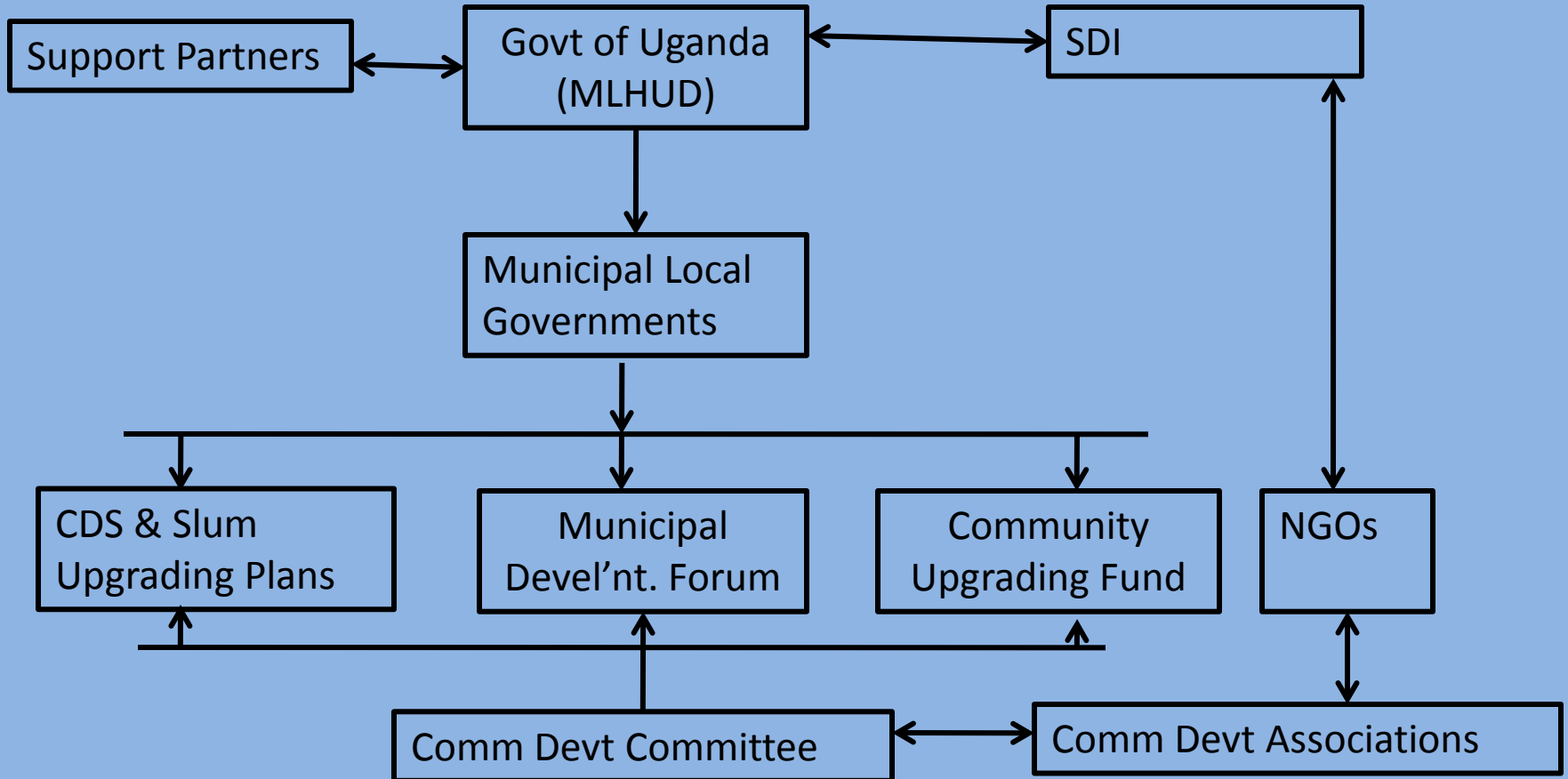
Improve access to services

- Formation & Capacity building of local area based residential organizations
- Municipal Development Strategies
- Detailed Slum Upgrading Strategies, Plans & priority projects
- Capitalization of Community Upgrading Funds
- Systematic review & improvement of Municipal Management & planning systems

Urban Devt Policies

- National Urban Policy & Strategic Urban development Plan
- Commissioning of urban research
- Sustainable urbanization Campaign
- Support the Capacity of Public Universities training Urban Planners
- Development of Municipal Institutional leadership programme

Institutional Arrangements



Plan of Operation (cont'd)

- Launch and sustain the National Urban Forum
- Start Municipal Forums and ensure their sustainability.
- Formulate the National Urban Policy
- Develop City Development Strategies.
- Undertake a detailed slum and municipality profiling exercise.
- Initiate research that is effectively linked to both the Municipal Forums and National Urban Forums.
- Undertake an institutional assessment of Local Government capacity to effectively engage in a rights and responsibilities approach to Urban Planning and Management and thereafter design an appropriate capacity building programme.

Conclusion

- This project has been designed taking into account sustainability considerations:
 - provides space for dialogue amongst stakeholders
 - Institutional capacity building at local & national levels
 - making resources available to the urban poor to better participate in the urban economy
 - Change in policy and practice: an inclusive pro-poor urban policy that promotes proactive participatory approaches for a sustainable urban future and ensuring access of the poor to land, services and economic opportunities within urban areas; and above all
 - Recognition of the rights of the poor and ensuring they honour their responsibilities.

Thank You for Your Kind Attention